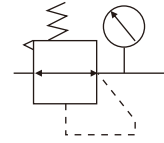




Symbol



Product feature

1. The XR maintain inputting constant operating pressure despite fluctuation in line pressure and the amount of air consumed.

Specification

Model	XR200-06	XR200-08	XR400-08	XR400-10	XR400-15	XR600-20	XR600-25
Working medium	Air						
Joint pipe bore	PS1/8"	PS1/4"	PS1/4"	PS3/8"	PS1/2"	PS3/4"	PS1"
Pressure range	0.15~1.2MPa(20~145psi)						
Max. pressure	1.2MPa(145psi)						
Proof pressure	1.6MPa(230psi)						
Operating temperature	5~60°C(Unfreeze)						
Weight	170g		570g			1320g	

Ordering code

XR200-08 - □ - L - □ - □ - PS

① ② ③ ④ ⑤ ⑥ ⑦

① Model

XR200: XR200 series Regulator Unit
 XR400: XR400 series Regulator Unit
 XR600: XR600 series Regulator Unit

③ Type code

Blank: Standard
 VC: Over flow type

② Joint pipe bore

Model	Joint pipe bore
XR200	06: PS1/8"
	08: PS1/4"
	08: PS1/4"
XR400	10: PS3/8"
	15: PS1/2"
	20: PS3/4"
XR600	25: PS1"

④ Pressure type

Blank: Standard type
 L: Low pressure

⑥ Pressure gauge

Blank: Pressure gauge
 N: No pressure gauge

⑤ Accessories

Blank: No bracket
 J: With bracket

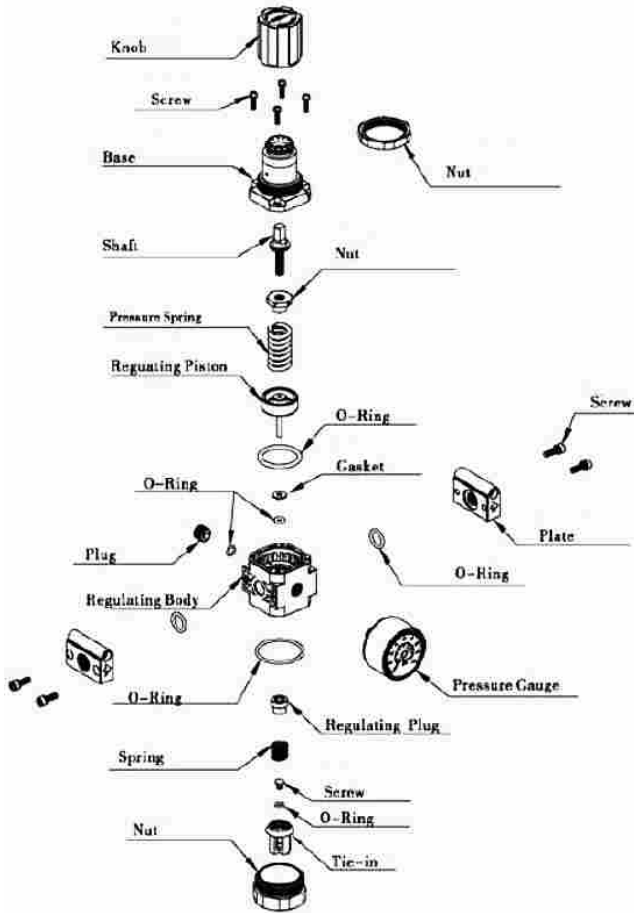
⑦ Thread type

Blank: PS thread
 PT: PT thread
 NPT: NPT thread

[Note]

1. Maximum pressure for lower pressure type is 0.4MPa.

Exploded view



Dimensions

