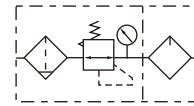


## XFC200~600 Series FR.L. combination



### Symbol



### Product feature

1. The XFC consisted of XFR and XL, each unit can be ordered separately.
2. The XF with water separator cleans the compressed air of fluid oil, condensation and dirt particles. For special application, 20um filter element can be replaced a by 5um filter element.
3. The XR maintain inputting constant operating pressure despite fluctuation in line pressure and the amount of consumed.
4. The proportional lubricator adds a regulated quantity of oil to the filtered air. The oil mist content proportional to the flow and oil can be added during operation. The oil drip rate is controlled by the adjustable bolt. Normally, 1 to 12 drops/1000L of the air is sufficient.

### Specification

Model	XFC200-06	XFC200-08	XFC400-08	XFC400-10	XFC400-15	XFC600-20	XFC600-25	
Working medium	Air							
Joint pipe bore	PS1/8"	PS1/4"	PS1/4"	PS3/8"	PS1/2"	PS3/4"	PS1"	
Filtering grade	20 μ m or 5 μ m							
Pressure range	0.15~1.2MPa(20~145psi)							
Max. pressure	1.2MPa(145psi)							
Proof pressure	1.6MPa(230psi)							
Operating temperature	5~60°C(Unfreeze)							
Drain bowl capacity	15CC		80CC			230CC		
Oil bowl capacity	30CC		160CC			380CC		
Recommended lubricant	ISO VG 32 or equivalent							
Constitute	Filter regulator unit	XFR200-06	XFR200-08	XFR400-08	XFR400-10	XFR400-15	XFR600-20	XFR600-25
	Lubricator unit	XL200-06	XL200-08	XL400-08	XL400-10	XL400-15	XL600-20	XL600-25

### Ordering code

**XFC200- 08 - M - □ - 20 - PS**



#### ① Model

XFC200: XFC200 series FR.L Unit

XFC400: XFC400 series FR.L Unit

XFC600: XFC600 series FR.L Unit

#### ② Joint pipe bore

Model	Joint pipe bore
XFC200	06: PS1/8"
	08: PS1/4"
XFC400	08: PS1/4"
	10: PS3/8"
	15: PS1/2"
XFC600	20: PS3/4"
	25: PS1"

#### ③ Drop type

Blank: Semi-auto drain

M: Manual drain

A: Automatic drain

#### ④ Pressure gauge

Blank: Pressure gauge

N: No pressure gauge

#### ⑤ Filtering grade

Blank: 20μm

5: 5μm

#### ⑥ Thread type

Blank: PS thread

PT: PT thread

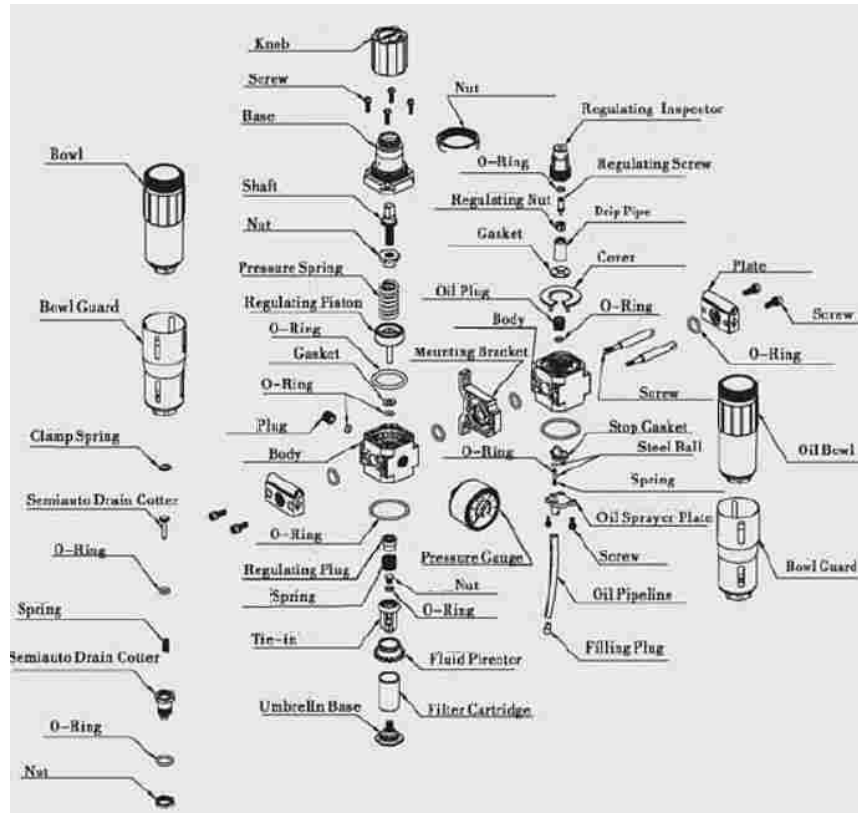
NPT: NPT thread

[Note]

1. Maximum pressure for X series auto drain is 0.8MPa.

2. Maximum pressure for lower pressure type is 0.4MPa.

### Exploded view



### Dimensions

