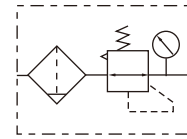




### Symbol



### Product feature

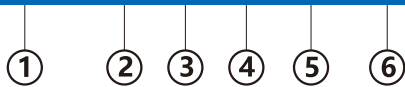
1. Filter and pressure regulator combine a single unit, and cleans the compressed air of fluid oil, condensation and dirt particles.  
For special application , 20um filter element can be replaced by a 5um filter element.
2. The XR maintain inputting constant operating pressure despite fluctuation in line pressure and the amount of air consumed.

### Specification

Model	XFC200-06	XFC200-08	XFC400-08	XFC400-10	XFC400-15	XFC600-20	XFC600-25
Working medium	Air						
Joint pipe bore	PS1/8"	PS1/4"	PS1/4"	PS3/8"	PS1/2"	PS3/4"	PS1"
Filtering grade	20 μ m or 5 μ m						
Pressure range	0.15~1.2MPa(20~145psi)						
Max. pressure	1.2MPa(145psi)						
Proof pressure	1.6MPa(230psi)						
Operating temperature	5~60°C(Unfreeze)						
Drain bowl capacity	15CC		80CC			230CC	

### Ordering code

**XFR200- 08 - M - □ - 20 - PS**



#### ① Model

XFR200: XFR200 series Filter Regulator Unit  
 XFR400: XFR400 series Filter Regulator Unit  
 XFR600: XFR600 series Filter Regulator Unit

#### ② Joint pipe bore

Model	Joint pipe bore
XFR200	06: PS1/8"
	08: PS1/4"
XFR400	08: PS1/4"
	10: PS3/8"
	15: PS1/2"
XFR600	20: PS3/4"
	25: PS1"

#### ③ Drop type

Blank: Semi-auto drain  
 M: Manual drain  
 A: Automatic drain

#### ④ Pressure gauge

Blank: Pressure gauge  
 N: No pressure gauge

#### ⑤ Filtering grade

Blank: 20μm  
 5: 5μm

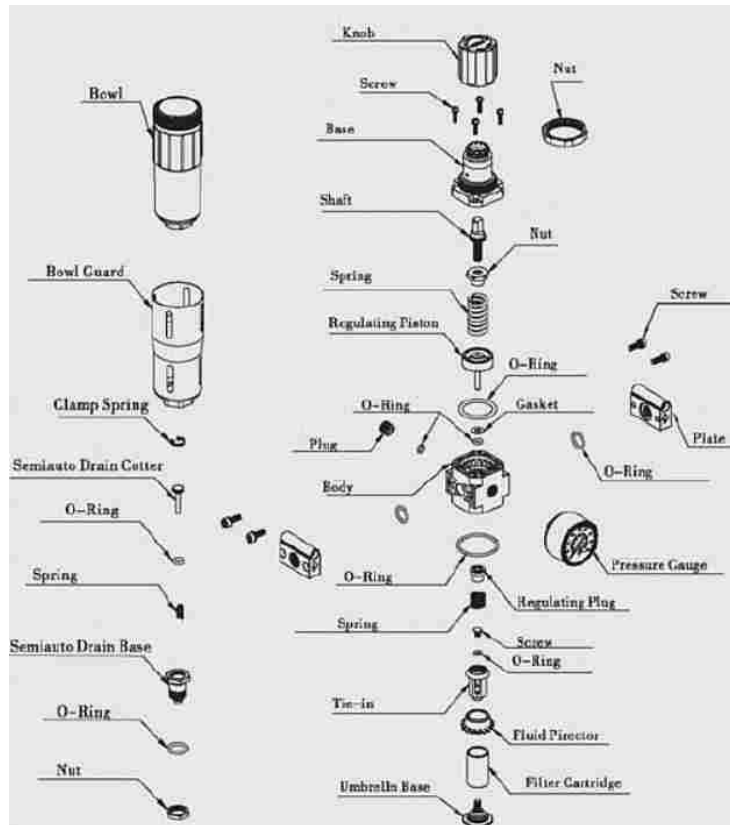
#### ⑥ Thread type

Blank: PS thread  
 PT: PT thread  
 NPT: NPT thread

[Note]

1. Maximum pressure for X series auto drain is 0.8MPa.
2. Maximum pressure for lower pressure type is 0.4MPa.

### Exploded view



### Dimensions

