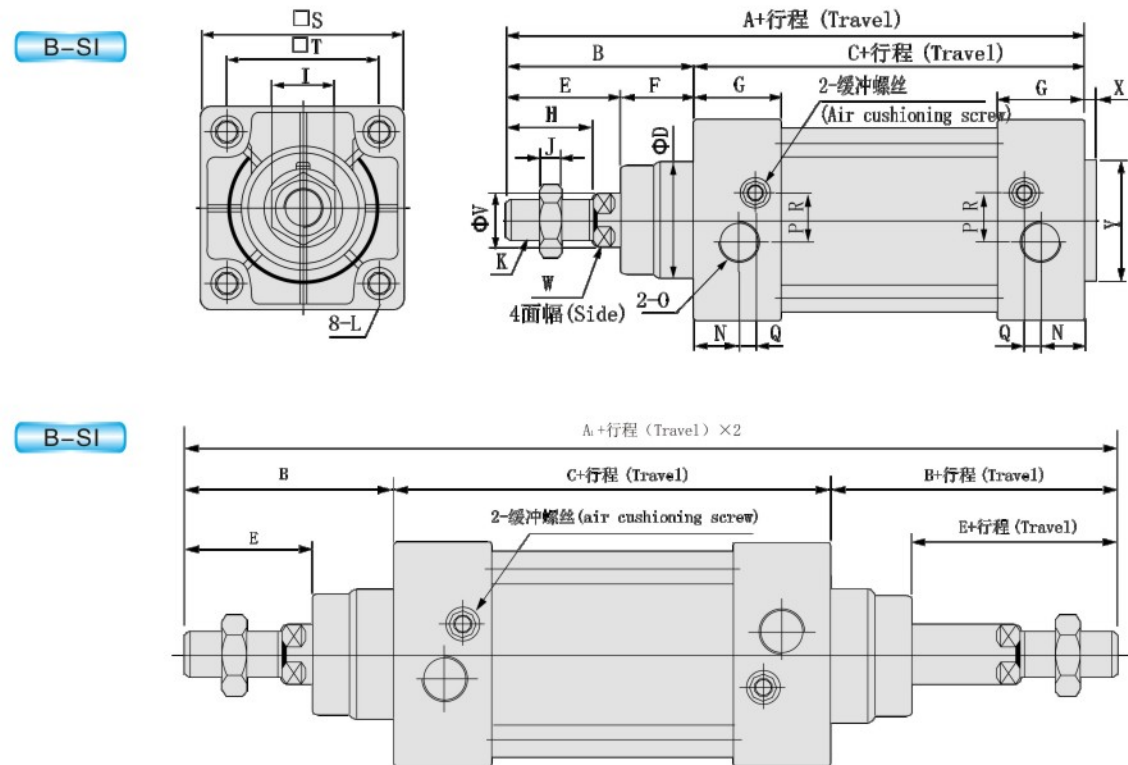
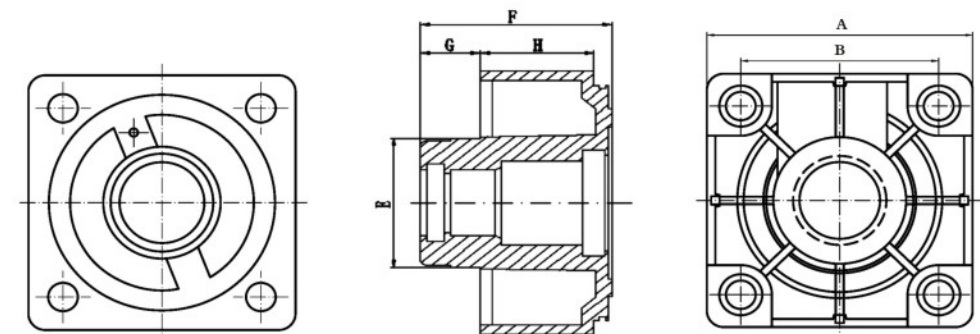


外部规格/Overall dimension



内径/符号 (Bore/Symbol)	A	A <sub>1</sub>	B	C	D	E	F	G	H	I	J	K	L	N
32	142	190	48	94	30	29	19	27	22	17	6	M10×1.25	M6	13
40	159	213	54	105	35	33	21	31	24	17	7	M12×1.25	M6	17
50	175	244	69	106	40	42	27	31	32	23	8	M16×1.5	M8	15.5
63	190	259	69	121	45	42	27	33	32	23	8	M16×1.5	M8	16.5
80	214	300	86	128	45	53	33	33	40	26	10	M20×1.5	M10	16.5
100	229	320	91	138	55	55	36	37	40	26	10	M20×1.5	M10	18.5
125	279	398	119	160	60	79	40	45	54	41	13.5	M27×2	M12	23
160	332	484	152	180	65	94	55	50	72	55	18	M36×2	M16	25
200	347	514	167	180	75	100	67	50	72	55	18	M36×2	M16	25

内径/符号 (Bore/Symbol)	O	P	Q	R	S	T	V	W	X	Y
32	G1/8	5.5	6	6	47	32.5	12	10	3	30
40	G1/4	6	7.5	8.5	53	38	16	13	3.5	35
50	G1/4	7.5	6.5	9.5	65	46.5	20	17	3.5	40
63	G3/8	7.5	7.5	11.5	75	56.5	20	17	4	45
80	G3/8	9	7.5	13.5	95	72	25	22	4	45
100	G1/2	9.5	8.5	13.5	115	89	25	22	4	55
125	G1/2	14	12	14	140	110	32	27	4	60
160	G3/4	15	12	15	180	140	40	36	4	65
200	G3/4	15	12	20	220	175	40	36	5	75



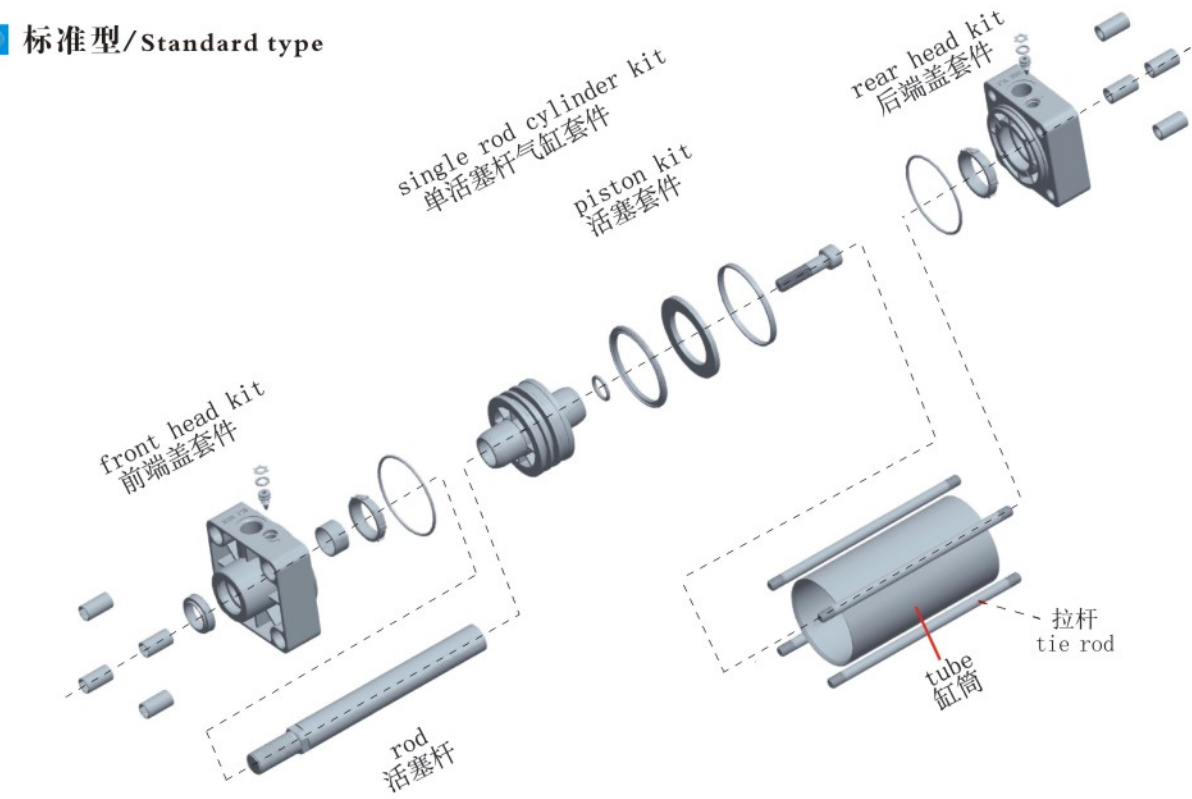
B-SC φ32-φ250端盖/Head						
规格/Spec. 代号/Code	A	B	E	F	G	H
φ32	45	33	φ28	48.5	15	27.5
φ40	50	37	φ32	48.5	15	27.5
φ50	62	47	φ38	48.5	15	27.5
φ63	75	56	φ38	48.5	15	27.5
φ80	94	70	φ47	60	21	33
φ100	112	84	φ47	60	21	33
φ125	138	104	φ52	64.5	20	38
φ160	174	134	φ62	70.5	25	38
φ200	214	163	φ62	70.5	30	38
φ250	267	202	φ86	93	35	48

配件订购码/Kit Ordering Code

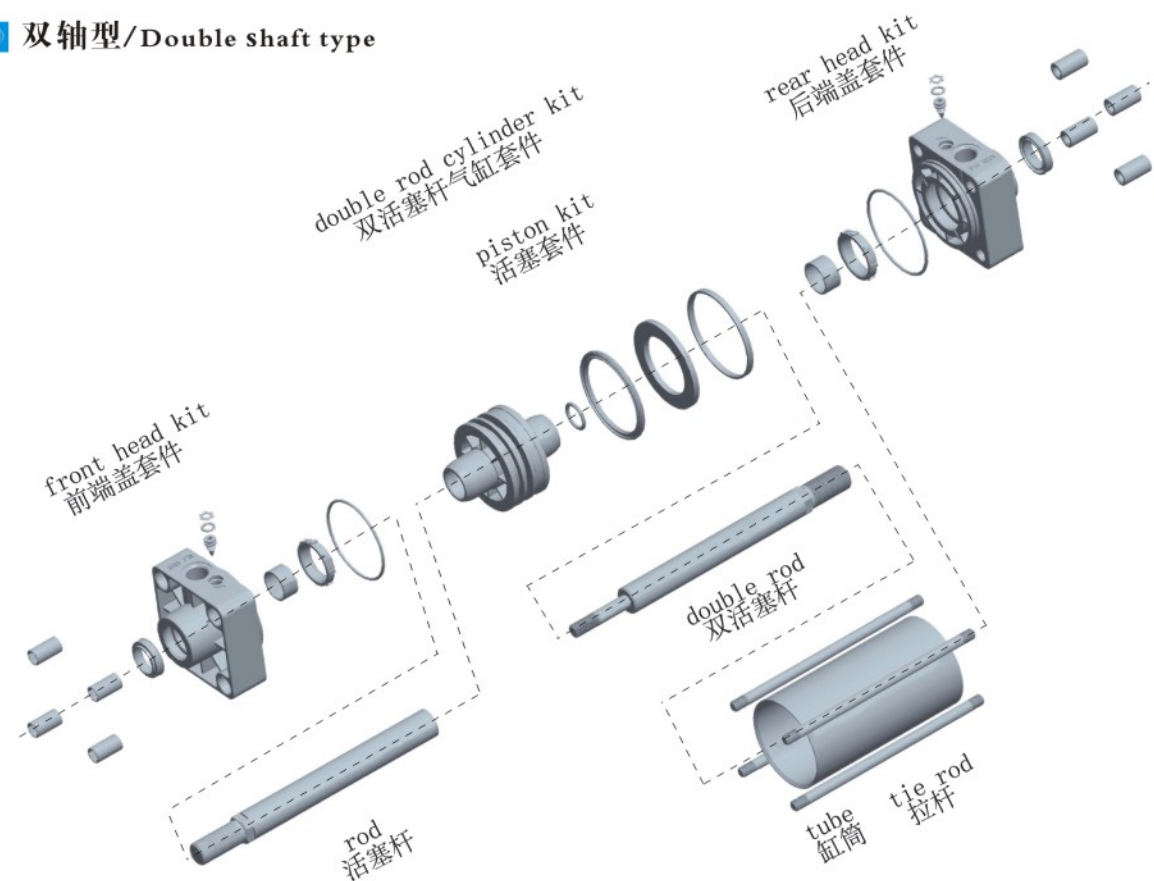


注: ① φ200, φ250为低压铸件。  
② SCE高温EU防尘只限于 φ32-φ100。  
③ #米型筒直径最大100。  
Remark: ① φ200, φ250 low pressure casting.  
② SCE Available for φ32-φ100 only  
③ # mickey mouse maximum diameter 100.

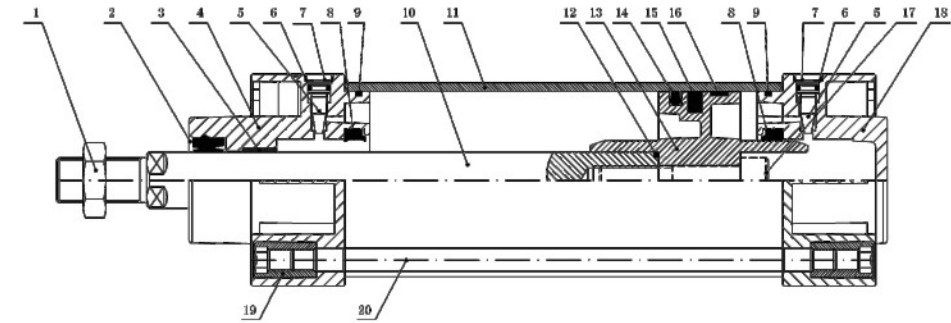
标准型/Standard type



双轴型/Double shaft type



内部结构及主要零件材质/Inner structure and material list for main parts



序号 No	名称 Name	材质 Material	序号 No	名称 Name	材质 Material
1	活塞杆螺帽 Nut for piston rod	碳钢 Carbon steel	11	缸筒 Tube	铝合金 Aluminium alloy
2	防尘圈 Anti dust seals	PU	12	活塞杆O型圈 O-ring for piston rod	NBR
3	含油轴承 Oil bearing	钢基粉末合金 Sinterized bronze	13	活塞 Piston	铝合金 Aluminium alloy
4	前端盖 Front cover	铝合金 Aluminium alloy	14	活塞圈 Piston ring	NBR
5	针阀 Air cushioning screw	黄铜 Brass	15	磁环 Magnet	铁氧体 Ferrite
6	针阀O型圈 O-ring for air cushioning screw	NBR	16	导向带 Wearing ring	POM
7	针阀卡环 Snap ring for air cushion hole screw	弹簧钢 Spring steel	17	活塞固定螺丝 Piston fixing screw	碳钢 Carbon steel
8	缓冲圈 Cushioning seals	NBR	18	后端盖 Back cover	铝合金 Aluminium alloy
9	管壁O型圈 O-ring for front cover	NBR	19	拉杆螺帽 Tie-rod nuts & screw	碳钢 Carbon steel
10	活塞杆 Piston rod	碳钢 Carbon steel	20	拉杆 Tie rod	碳钢 Carbon steel

密封件/Packing and O-Ring List-单圈活塞/Single ring piston

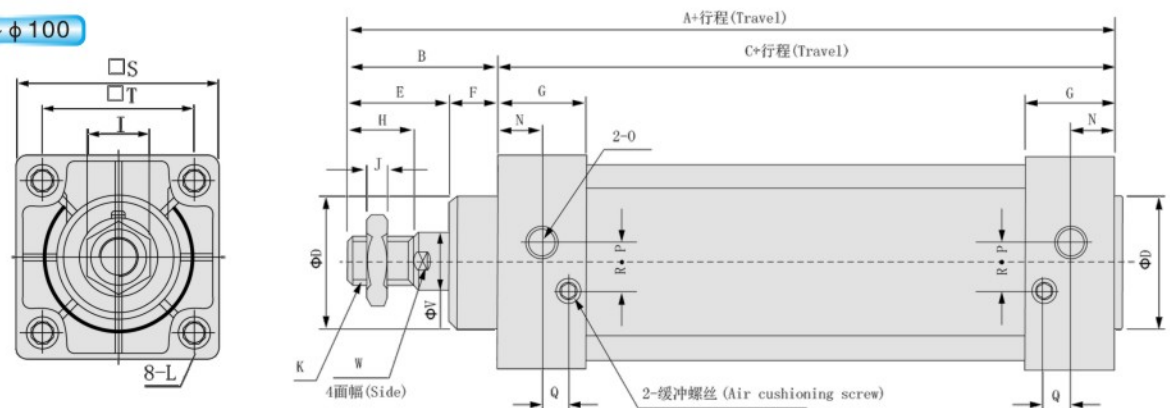
规格 Item	防尘圈 Rod packing	缓冲圈 Cushion packing	端盖O型圈 End cover O-Ring	磁环 Magnetic Ring	单活塞圈 Single ring piston	轴心圈 Piston O-Ring	缓冲O型圈 Cushion O-Ring
直径 Bore size mm	数量No. 1	数量No. 2	数量No. 2	数量No. 2	数量No. 1	数量No. 1	数量No. 2
φ 32	BDRP-12	BPP-1622	φ 32※ φ 2	φ 31.5※ φ 24.5※5	B-COP-32	φ 12※ φ 2	φ 8※ φ 1.5
φ 40	BDRP-16	BPP-2028	φ 40※ φ 2	φ 39.5※ φ 25※5	B-COP-40	φ 16※ φ 2.4	φ 8※ φ 1.5
φ 50	BDRP-20	BPP-2837	φ 50※ φ 2	φ 49.5※ φ 35※5	B-COP-50	φ 20※ φ 2.4	φ 8※ φ 1.5
φ 63	BDRP-20	BPP-2837	φ 63※ φ 2	φ 62.5※ φ 48※5	B-COP-63	φ 20※ φ 2.4	φ 8※ φ 1.5
φ 80	BDRP-25	BPP-3545	φ 80※ φ 2	φ 79.5※ φ 65※5	B-COP-80	φ 25※ φ 2.4	φ 8※ φ 1.5
φ 100	BDRP-25	BPP-3545	φ 100※ φ 2	φ 99.5※ φ 85※5	B-COP-100	φ 25※ φ 2.4	φ 8※ φ 1.5
φ 125	BDRP-32	BPP-4050	φ 125※ φ 2.4	φ 120※ φ 96※6	B-COP-125	φ 32※ φ 3.1	φ 12※ φ 1.5
φ 160	BDRP-40	BPP-5060	φ 160※ φ 3.1	φ 155※ φ 131.5※6	B-COP-160	φ 40※ φ 3.1	φ 12※ φ 1.5
φ 200	BDRP-40	BPP-5060	φ 200※ φ 3.1	φ 195※ φ 172※6	B-COP-200	φ 40※ φ 3.1	φ 12※ φ 1.5
φ 250	BDRP-50	BPP-5774	φ 250※ φ 3.1	φ 245※ φ 222※6	B-COP-250	φ 50※ φ 3.1	φ 16※ φ 1.5

密封件/Packing and O-Ring List-双圈活塞/Double ring piston

规格 Item	防尘圈 Rod packing	缓冲圈 Cushion packing	端盖O型圈 End cover O-Ring	磁环 Magnetic Ring	双活塞圈 Double ring piston	轴心圈 Piston O-Ring	缓冲O型圈 Cushion O-Ring
直径 Bore size mm	数量No. 1	数量No. 2	数量No. 2	数量No. 2	数量No. 2	数量No. 1	数量No. 2
φ 50	BDRP-20	BPP-2837	φ 50※ φ 2	φ 46※ φ 22※5	B-QZ8-5042	φ 20※ φ 2.4	φ 8※ φ 1.5
φ 63	BDRP-20	BPP-2837	φ 63※ φ 2	φ 59※ φ 40※5	B-QZ8-6353	φ 20※ φ 2.4	φ 8※ φ 1.5
φ 80	BDRP-25	BPP-3545	φ 80※ φ 2	φ 76※ φ 58※5	B-QZ8-8070	φ 25※ φ 2.4	φ 8※ φ 1.5
φ 100	BDRP-25	BPP-3545	φ 100※ φ 2	φ 96※ φ 77※5	B-QZ8-10090	φ 25※ φ 2.4	φ 8※ φ 1.5

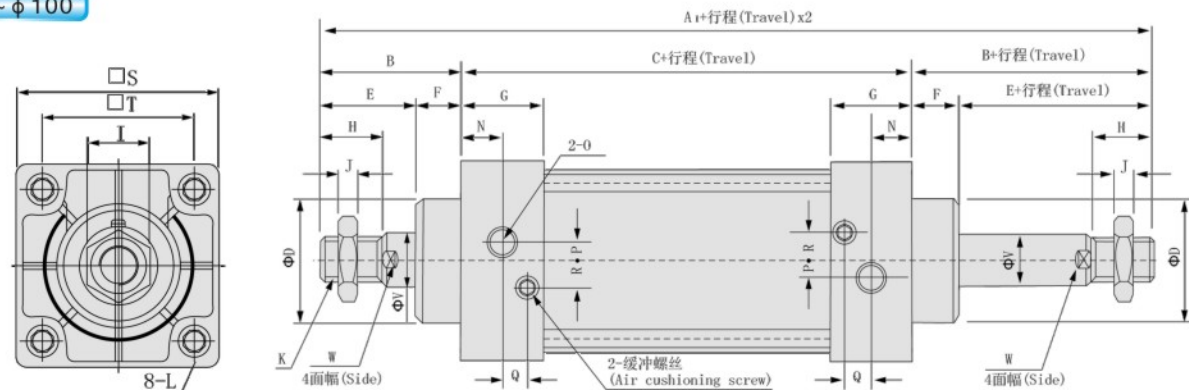
基本尺寸/Basic specification

φ32~φ100



基本尺寸/Basic specification

φ32~φ100

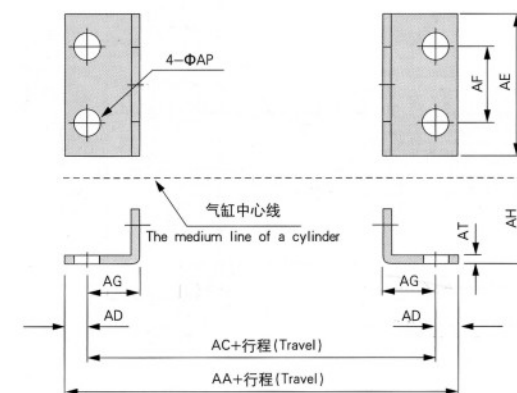


内径/符号 (Bore/Symbol)	A	A <sub>1</sub>	B	C	D	E	F	G	H	I	J	K	L
32	140	187	47	93	28	32	15	27.5	22	17	6	M10×1.25	M6×1
40	142	191	49	93	32	34	15	27.5	24	17	7	M12×1.25	M6×1
50	150	207	57	93	38	42	15	27.5	32	23	8	M16×1.5	M6×1
63	153	210	57	96	38	42	15	27.5	32	23	8	M16×1.5	M8×1.25
80	183	258	75	108	47	54	21	33	40	26	10	M20×1.5	M10×1.5
100	189	264	75	114	47	54	21	33	40	26	10	M20×1.5	M10×1.5
125	203	291	88	115	52	68	20	38	54	41	13.5	M27×2.0	M12×1.75
160	239	352	113	126	62	88	25	38	72	55	18	M36×2.0	M16×2.0
200	244	362	118	126	62	88	30	38	72	55	18	M36×2.0	M16×2.0
250	294	435	141	153	86	106	35	48	84	65	21	M42×2.0	M20×2.5

内径/符号 (Bore/Symbol)	N	O	P	Q	R	S	T	V	W
32	13.7	G1/8	3.5	7.5	7	45	33	12	10
40	13.5	G1/4	6	8.2	9	50	37	16	14
50	13.5	G1/4	8.5	8.2	9	62	47	20	17
63	13.5	G3/8	7	8.2	8.5	75	56	20	17
80	16.5	G3/8	10	9.5	14	94	70	25	22
100	16.5	G1/2	11	9.5	14	112	84	25	22
125	19	G1/2	10	5	20	138	104	32	27
160	19	G3/4	15	6	15	174	134	40	36
200	19	G3/4	15	3	15	214	163	40	36
250	25.5	G1	20	7.5	20	267	202	50	46

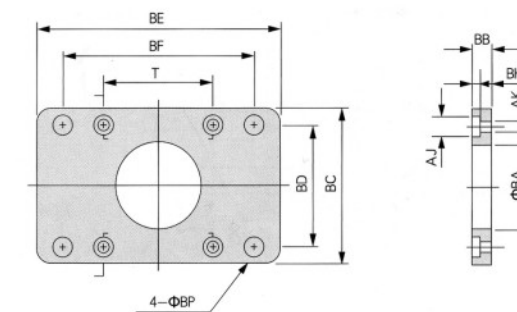
安装附件/Mounting kits

B-LB型尺寸/B-LB Size



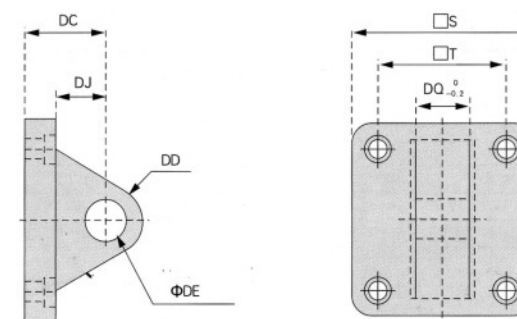
符号/内径 (Symbol/Bore)	32	40	50	63	80	100	125	160	200	250
AA	152	169	173	184	200	210	221	246	276	323
AC	134	140	149	158	168	174	185	206	226	273
AD	9.5	14.5	12	13	16	18	18	20	25	25
AE	50	57	68	80	97	112	138	174	214	267
AF	33	36	47	56	70	84	104	134	163	201
AG	20.5	23.5	28	31	30	30	35	40	50	60
AH	28	30	36.5	41	49	57	70	91	113.5	141
AP	9	12	12	12	14	14	17	17	22	26
AT	3	3	3	3	4	4	6	8	9	15

B-FA型尺寸/B-FA Size  
B-FB型尺寸/B-FB Size



符号/内径 (Symbol/Bore)	32	40	50	63	80	100	125	160	200	250
BA	28.3	32.3	38.3	38.3	47.3	47.5	52.5	62.5	62.5	86.5
BB	10	10	10	12	16	16	20	20	25	25
BC	47	52	65	76	95	115	140	177	217	270
BD	33	36	47	56	70	84	104	134	163	201
BE	72	84	104	116	143	162	196	248	286	356
BF	58	70	86	98	119	138	168	212	250	312
BH	6.5	6.5	6.5	8.5	10.5	10.5	12.5	16.5	16.5	20.5
AJ	10.5	10.5	10.5	13.5	16.5	16.5	19	25	25	31
AK	6.5	6.5	6.5	8.5	10.5	10.5	12.5	16.5	16.5	20.5
BP	7	7	9	9	11	11	14	18	18	22
T	33	37	47	56	70	84	104	134	163	202

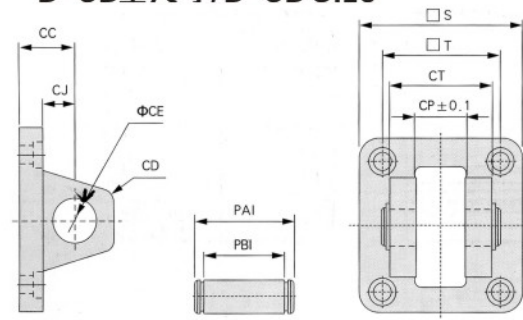
B-CA型尺寸/B-CA Size



符号/内径 (Symbol/Bore)	32	40	50	63	80	100	125	160	200	250
S	48	50	62	75	94	112	138	173	213	255
T	33	37	47	56	70	84	104	134	163	202
DC	34	34	34	34	48	48	32	40	60	70
DD	14	14	15	15	20	20	20	28	30	36
DE	12	14	14	14	20	20	20	28	28	36
DJ	24	24	24	24	34	34	15	20.5	37	46
DQ	16	20	20	20	32	32	31.7	39.7	39.7	49.7

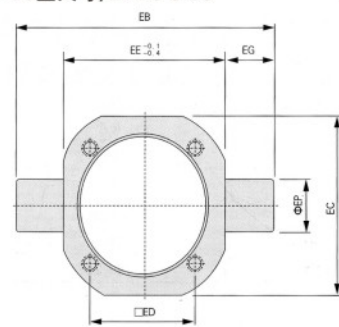
安装附件/Mounting kits

B-CB型尺寸/B-CB Size



符号/内径 (Symbol/Bore)	32	40	50	63	80	100	125	160	200	250
CC	19	19	19	19	32	32	32	40	60	70
CD	5	5	3	3	8	8	10			
CE	12	14	14	14	20	20	20	28	28	36
CJ	11	11	11	11	21	21	18	25	37	46
CP	16.3	20.3	20.3	20.3	32.3	32.3	32.1	40.1	40.1	50.1
CT	32	44	52	52	64	64	64	80	80	100
PAI	41	51.8	60.3	60.3	73.8	73.8	73	90.2	90.2	130
PBI	33.5	45.5	54	54	65.5	65.5	64.8	80.8	80.8	108
S	48	50	62	75	94	112	138	174	214	267
T	33	37	47	56	70	84	104	134	163	202

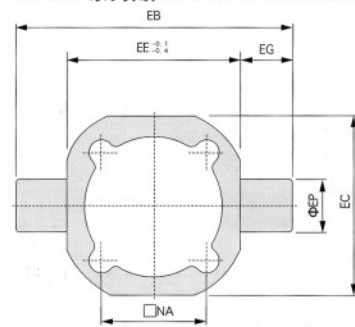
B-TC型尺寸/B-TC Size



B-SC系列用/Use for B-SC series



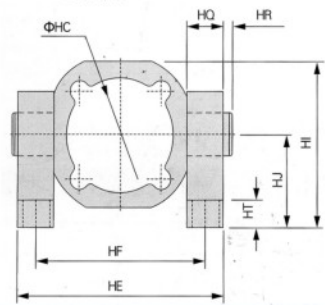
B-SCII系列用/Use for B-SCII series



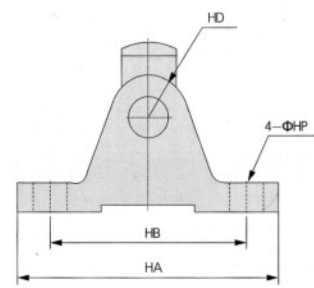
内径/符号(Bore/Symbol)	EB	EC	ED	EE	EG	EP	ET
40	113	63	37	63	25	25	30
50	126	76	47	76	25	25	30
63	138	88	56	88	25	25	30
80	164	114	70	114	25	25	35
100	182	132	84	132	25	25	38
125	208	158	104	158	25	25	40
160	272	200	134	200	36	36	46
200	318	246	163	246	36	36	46
250	394	304	202	304	45	45	56

B-TC-M型/B-TC-M Type

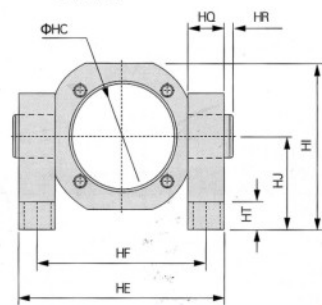
B-SCII系列用/Use for SCII series



B-TC-M系列用/Use for B-TC-M series

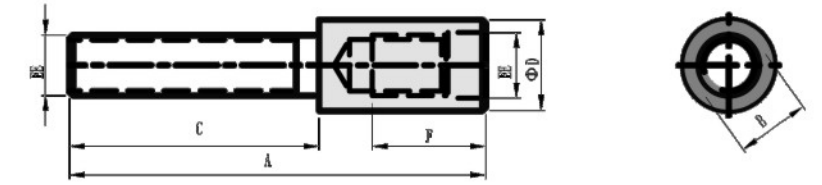


B-SC系列用/Use for B-SC series



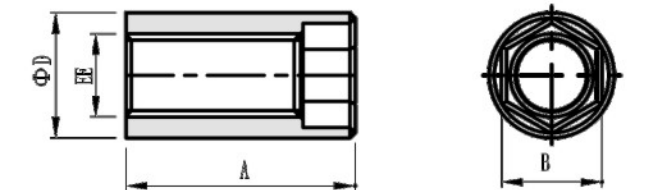
内径/符号(Bore/Symbol)	HA	HB	HE	HF	HJ	HQ	HR	HT	HP
40	110	80	109	86	50	23	2	12	12
50	110	80	122	99	50	23	2	12	12
63	110	80	134	111	50	23	2	12	12
80	120	85	160	137	70	23	2	14	14
100	120	85	178	155	70	23	2	14	14
125	145	105	211	183	85	23	2	20	18
160	185	140	272	236	130	34	2	25	22
200	185	140	318	282	130	34	2	25	22
250	215	165	394	349	160	43	2	28	26

拉杆螺丝 Tie rod screw



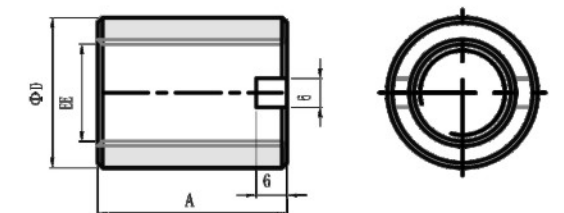
孔径 Bore	符号 Symbol	A	B	C	D	EE	F	订购代码/ Order code	重量/克 Weight(g)
M6		40	6	22.5	9	M6×1.0	18	B-DNG/B-DNC/B-MB/B-SI32/40	10.6
M8		44	8	22.5	12	M8×1.25	18	B-DNG/B-DNC/B-MB/B-SI50/63	19.3
M10		53	10	28	15	M10×1.5	21	B-DNG/B-DNC/B-MB/B-SI80/100	35.1
M12		60	12	30	18	M12×1.75	25	B-DNG/B-DNC/B-MB/B-SI125	65.2

拉杆螺帽 Tie rod nut



孔径 Bore	符号 Symbol	A	B	D	EE	订购代码 Order code	重量/克 Weight(g)
M6		21.5	6	9	M6×1.0	B-DNG/B-MB32/40 B-SC32/40/50 B-SI32/40	6.2
M8		21.5	8	12	M8×1.25	B-DNG/B-MB50/63 B-SC63/B-SI50/63	11.2
M10		25	10	15	M10×1.5	B-DNG/B-MB80/100 B-SC/B-SI80/100	20.1
M12		25	12	18	M12×1.75	B-MB125	29.5
M12		29	12	18	M12×1.75	B-DNC/B-DNG/B-SI125	34.2
M16		35	17	24	M16×2.0	B-DNG/B-SI160/200	67.5

拉杆螺帽 Tie rod nut



孔径 Bore	符号 Symbol	A	D	EE	订购代码/ Order code	重量/克 Weight(g)
M20		39	31	M20×2.5	B-DNG250	141
M24		44	35	M24×3.0	B-DNG320	210.2